

DM5 Series

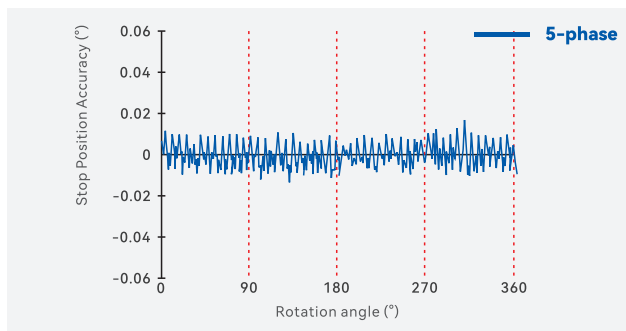
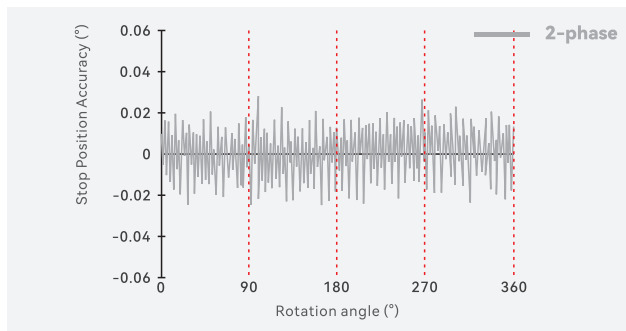
5-phase Stepper Drive



Features

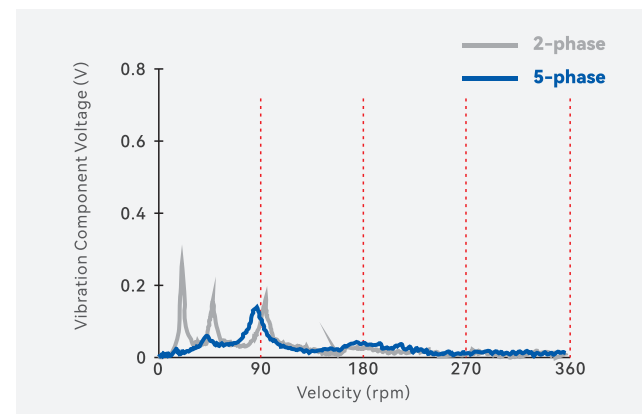
High Positioning Accuracy

- Leadshine DM5 series achieves higher stopping accuracy with 0.72° stepper motor.



Low Vibration

- Benefit from the one-third or less vibration reduction, Leadshine DM5 series makes the equipment motion smoother, reducing the noise and improving the processing precision.



Compact and Lightweight

- Compared to the general 2-phase model, Leadshine DM5 series is better at volume reduction and mass reduction.

Applications

DM5 series can be used in a wide variety of applications, including fixed-speed drive synchronized to a command pulse, accurate positioning, and stable stopping.



Semiconductor devices



Analytical Testing devices



ATMs



Monitoring cameras
Spotlights



Packaging machines



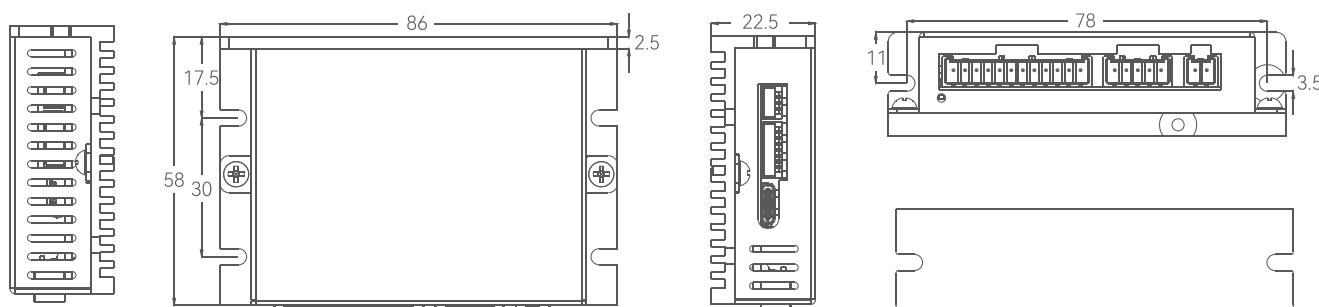
Embroidering machines



Automatic ticket gates

Dimensions

(Unit: mm)



Specifications

Model	DM5-440	DM5-EC542
Input Voltage	40VDC Max	50VDC Max
Output Current	4.0A Peak	4.2A Peak
Command Source	Pulse	EtherCAT
Environment	Avoid dust, oil fog and corrosive gases	
Humidity	40% RH - 90% RH	
Operating Temperature	0°C - 40°C (32°F - 109°F)	
Vibration	10-50Hz / 0.15 mm	
Storage Temperature	-20°C - 65°C (-4°F - 149°F)	